

Technical Service Bulletin 608

UF System Design

Although NANO H₂O does not typically supply the UF system, it is critical to have a properly designed system, capable of following NANO H₂O recommended operating process. Please refer to the NANO H₂O Technical Service Bulletins (TSB's) for system design recommendations.

Key Operating Parameter Definitions

- **Filtrate flow rate**

Filtrate flow rate is the rate of the water that passes through the membrane from the feed side to the filtrate side. It is a function of the pressure, and the quality of the feed water. The filtrate flow rate should be set in according to NANO H₂O's recommended membrane flux.

- **Filtrate flux**

Filtrate flux is the volume of filtered water passing through a unit of membrane surface area in a specified period of time. It is commonly expressed as l/mh (Liters of filtered water/m² of surface area/hour of filtration time), gfd (gallons of filtered water/ft² of surface area/day of filtration time), or m/d (m³ of filtered water/m² of surface area/day of filtration time). Appropriate flux selection is one of the most important design and operating considerations. The filtrate flux should be set according to NANO H₂O's recommendation for your specific application. The flux may be increased or decreased during operation to account for changes in feed water quality, temperature or product water demand.

- **Transmembrane Pressure**

Transmembrane Pressure (TMP) is the pressure difference between the feed and filtrate sides of the membrane. It is commonly measured in units of bar, psi, or kPa. TMP is the driving force for filtration. Most ultrafiltration systems operate at a constant flow rate during filtration. As filtration occurs, solids deposited on the membrane surface will create resistance to filtration causing the TMP to increase. Proper design filtrate flux is necessary to control the rate of TMP increase. Physical and chemical cleaning are required to remove accumulated fouling and reduce TMP. The maximum allowable TMP is 0.15 MPa (22.1 psi).

Technical Service Bulletin 608

UF System Design

- **Normalized permeability**

Normalized permeability, or specific flux, is defined as filtrate flux per applied transmembrane pressure (differential pressure) corrected to a specified temperature, typically 20 or 25 degrees Celsius. It is commonly measured in units of l/mh/bar or gfd/psi @ 20°C. Normalized permeability is one of the most important parameters used to measure the performance of the membrane system. In a properly designed and operated UF system, the normalized permeability will decrease slowly between cleanings and will return to previous levels after cleaning such that it remains essentially constant over long-term operation.

- **Filtration cycle duration**

The filtration cycle duration is dependent on the quality of the feed water. An appropriate design value should be selected per NANO^H2O's recommendation. The actual time should be set by testing at site and adjusted according to the changes of the feed water quality during the operation. Typical filtration cycle duration is 20-60 minutes.

To facilitate operation explanation, the following typical P&IDs are provided.

Technical Service Bulletin 608

UF System Design

Feedwater Limiting Conditions

Parameter	Allowed Range	Comments
pH	1 – 10 (NIPS) 1-14 (TIPS)	1—14 allowed during cleaning (TIPS)
Particle Size	≤0.5 mm, ≤0.12 mm for seawater feeds, no sharp particles allowed	To prevent mechanical damage
Oil	≤0.5 mg/L (NIPS) ≤2 mg/L (TIPS)	To prevent membrane fouling
Turbidity	<300 NTU	Contact the sales team if your operating parameters exceed the allowed

 CAUTION

This is not an extensive list and does not constitute the only conditions for a valid warranty claim.
Refer to your project specific warranty document for all conditions that apply to your warranty

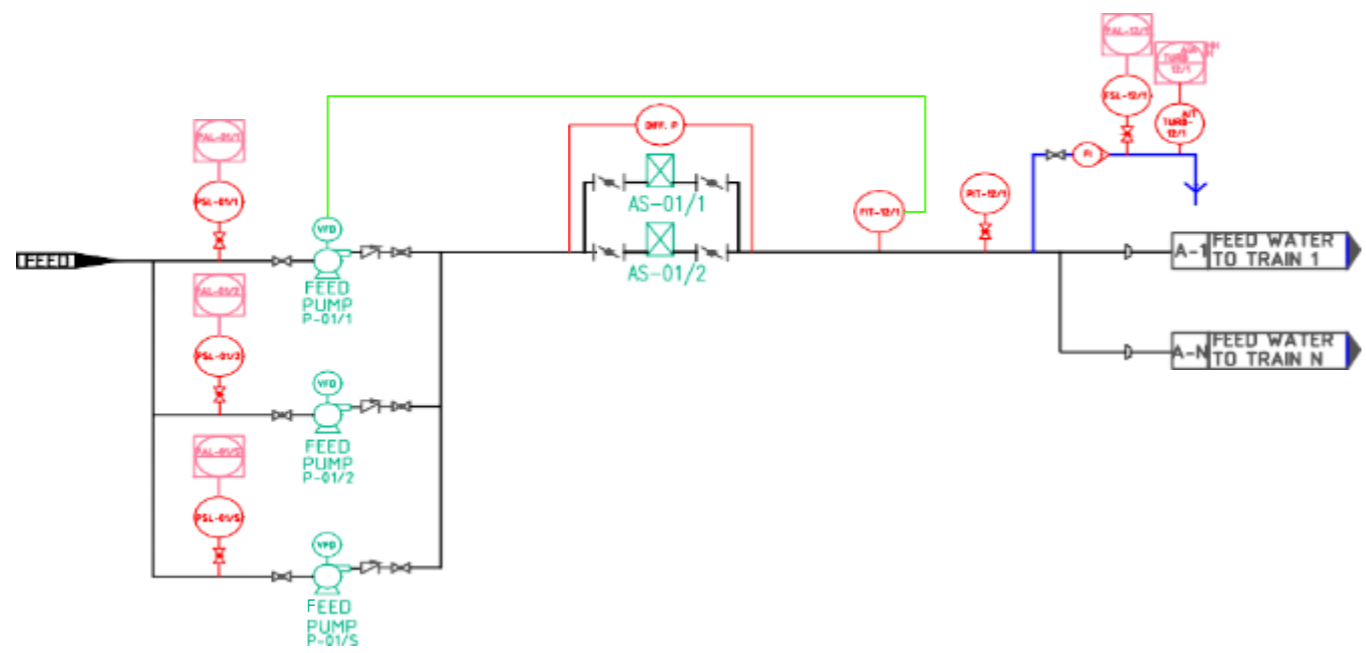
The following P&I Diagrams refer to QuantumFlux Pxxxx-D modules

The use of this product in and of itself does not necessarily guarantee the removal of cysts and pathogens from water. Effective cyst and pathogen reduction is dependent on the complete system design and on the operation and maintenance of the system. No freedom from any patent owned NanoH2O Co., Ltd. or others is to be inferred. Because use conditions and applicable laws may differ from one location to another and may change with time. Customer is responsible for determining whether products and the information in this document are appropriate for

Customer's use and for ensuring that Customer's workplace and disposal practices are in compliance with applicable laws and other government enactments. NanoH2O assumes no obligation or liability for the information in this document. NO WARRANTIES ARE GIVEN; ALL IMPLIED WARRANTIES OF MERCHANTABILITY OR FITNESS FOR A PARTICULAR PURPOSE ARE EXPRESSLY EXCLUDED. All trademarks stated herein are properties of their respective companies. © NanoH2O Co., Ltd.

FEED PUMPING CENTER TO ALL TRAINS

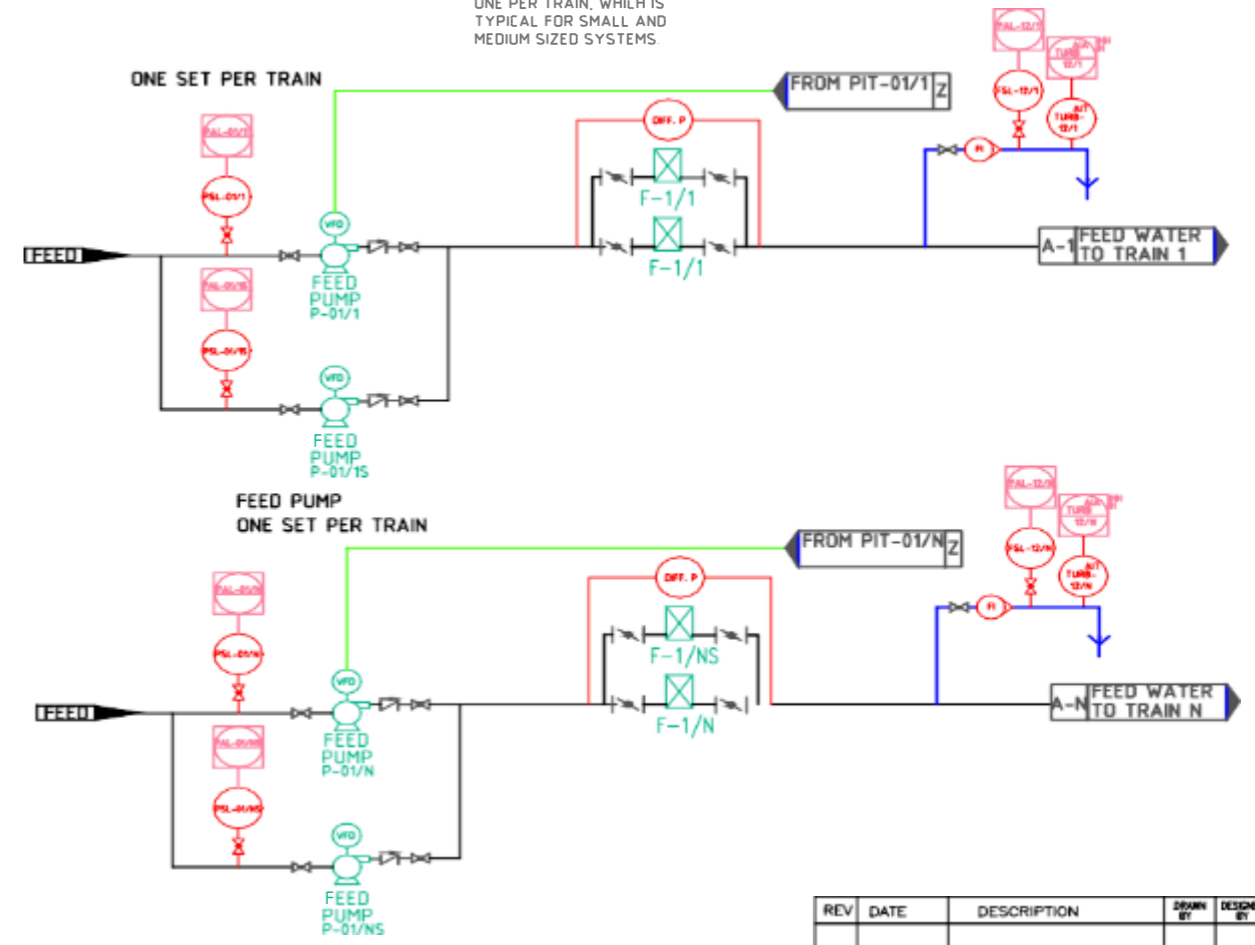
FEED PUMPS ARRANGED IN PARALLEL WITH DISCHARGE TO FEED WATER HEADER, WHICH IS TYPICAL FOR LARGER SYSTEMS.



OR

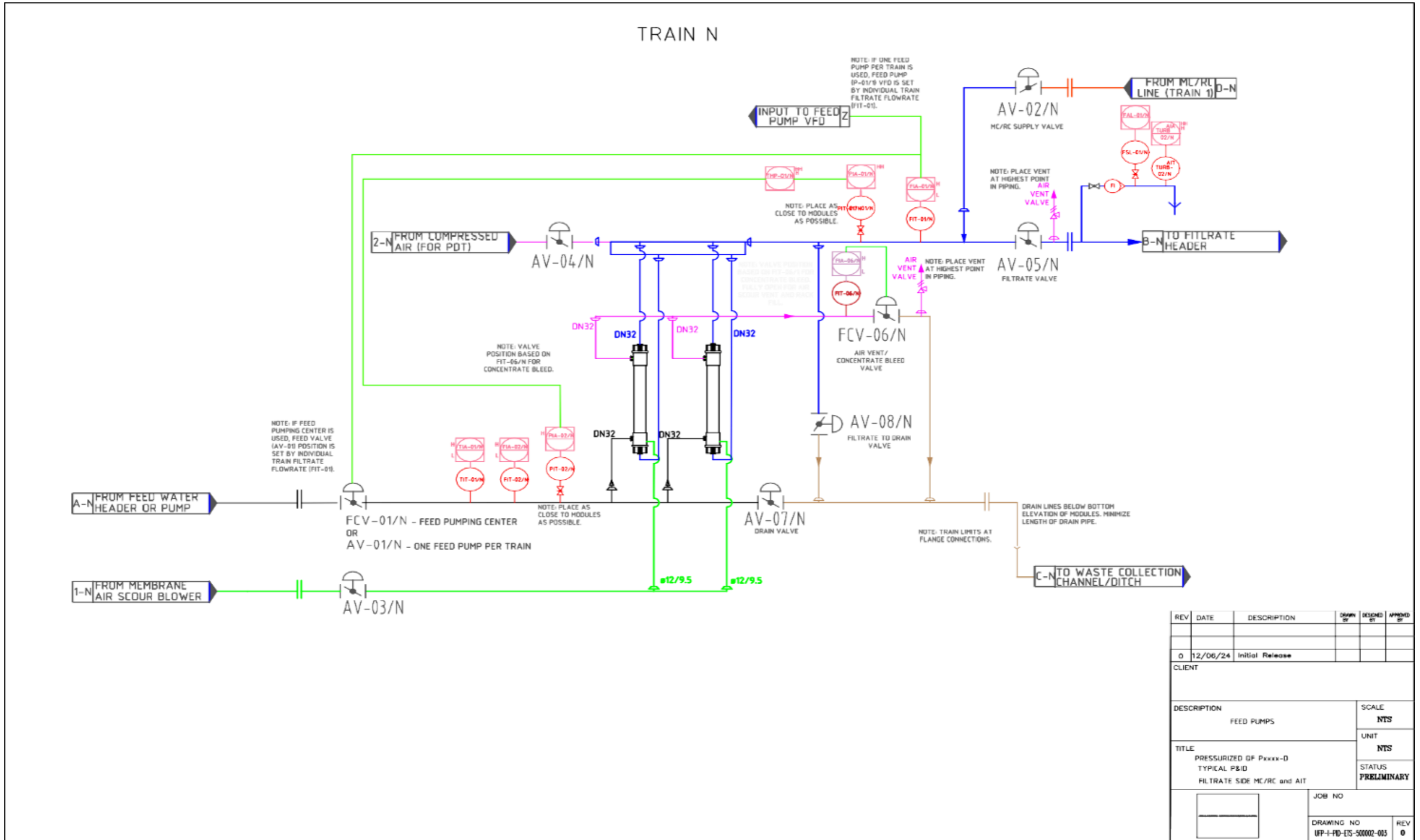
ONE FEED PUMP PER TRAIN

FEED PUMPS ARRANGED AS ONE PER TRAIN, WHICH IS TYPICAL FOR SMALL AND MEDIUM SIZED SYSTEMS.



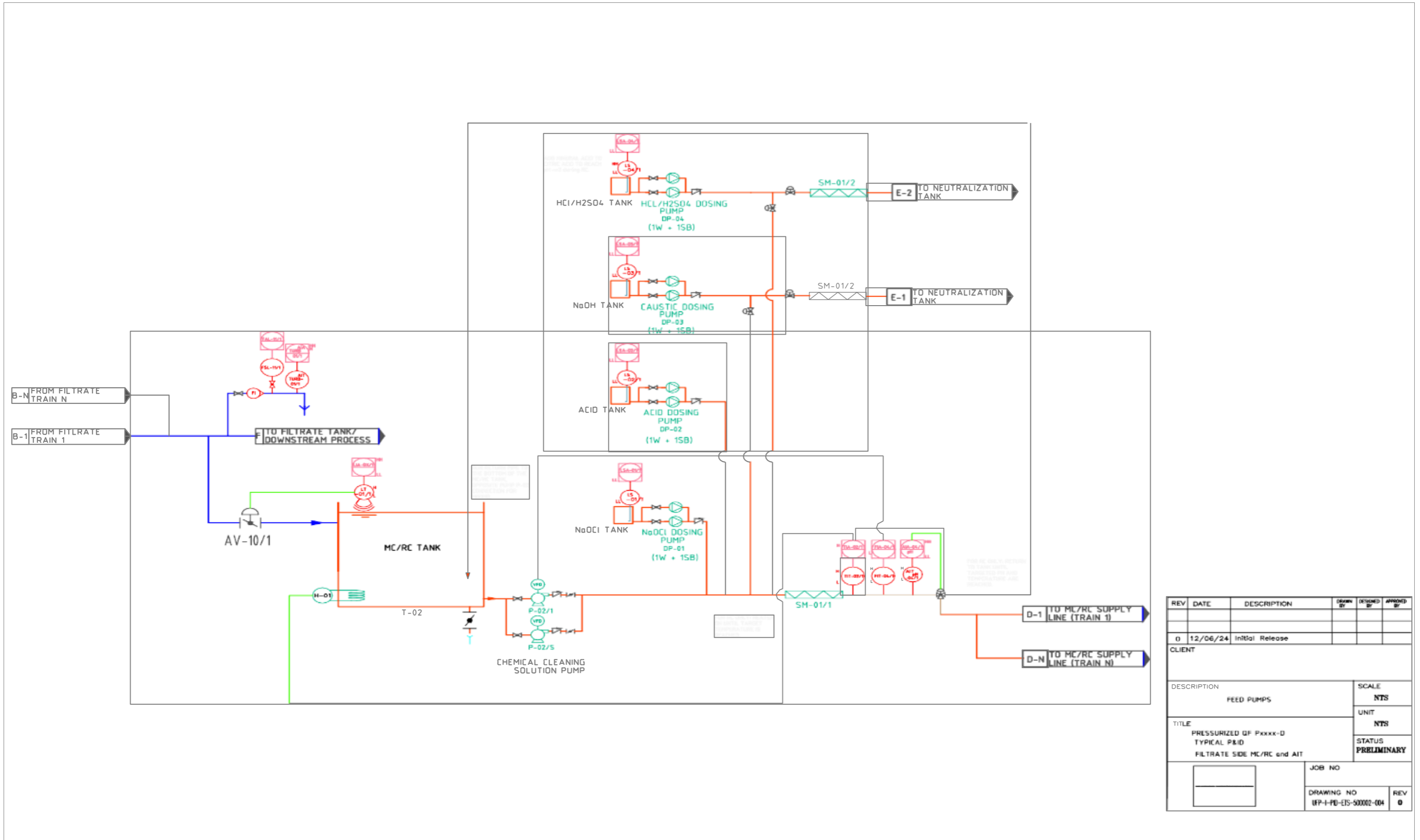
REV	DATE	DESCRIPTION	DRAWN BY	DESIGNED BY	APPROVED BY
0	12/06/24	Initial Release			
CLIENT					
DESCRIPTION FEED PUMPS					SCALE NTS
TITLE PRESSURIZED QF Pxxxx-D TYPICAL P&ID FILTRATE SIDE MC/RC and AIT					UNIT NTS
					STATUS PRELIMINARY
			JOB NO		
			DRAWING NO UFP-I-PD-ETS-500002-001	REV 0	

The information contained in this drawing is confidential, privileged and only for the information of the intended recipient and may not be used, published or redistributed without the prior written consent of NANO20. The information expressed is in good faith and while every care has been taken in preparing this drawing, NANO20 makes no representations and gives no warranties of whatever nature in respect of these documents, including but not limited to the accuracy or completeness of any information, facts and/or opinions contained therein.



REV	DATE	DESCRIPTION	DRAWN BY	DESIGNED BY	APPROVED BY
0	12/06/24	Initial Release			
CLIENT					
DESCRIPTION					SCALE
FEED PUMPS					NTS
TITLE					UNIT
PRESSURIZED OF Pxxxx-D					NTS
TYPICAL P&ID					STATUS
FILTRATE SIDE MC/RC and AIT					
JOB NO				DRAWING NO	
				UPP-1-PID-ETS-50002-003	
				REV 0	

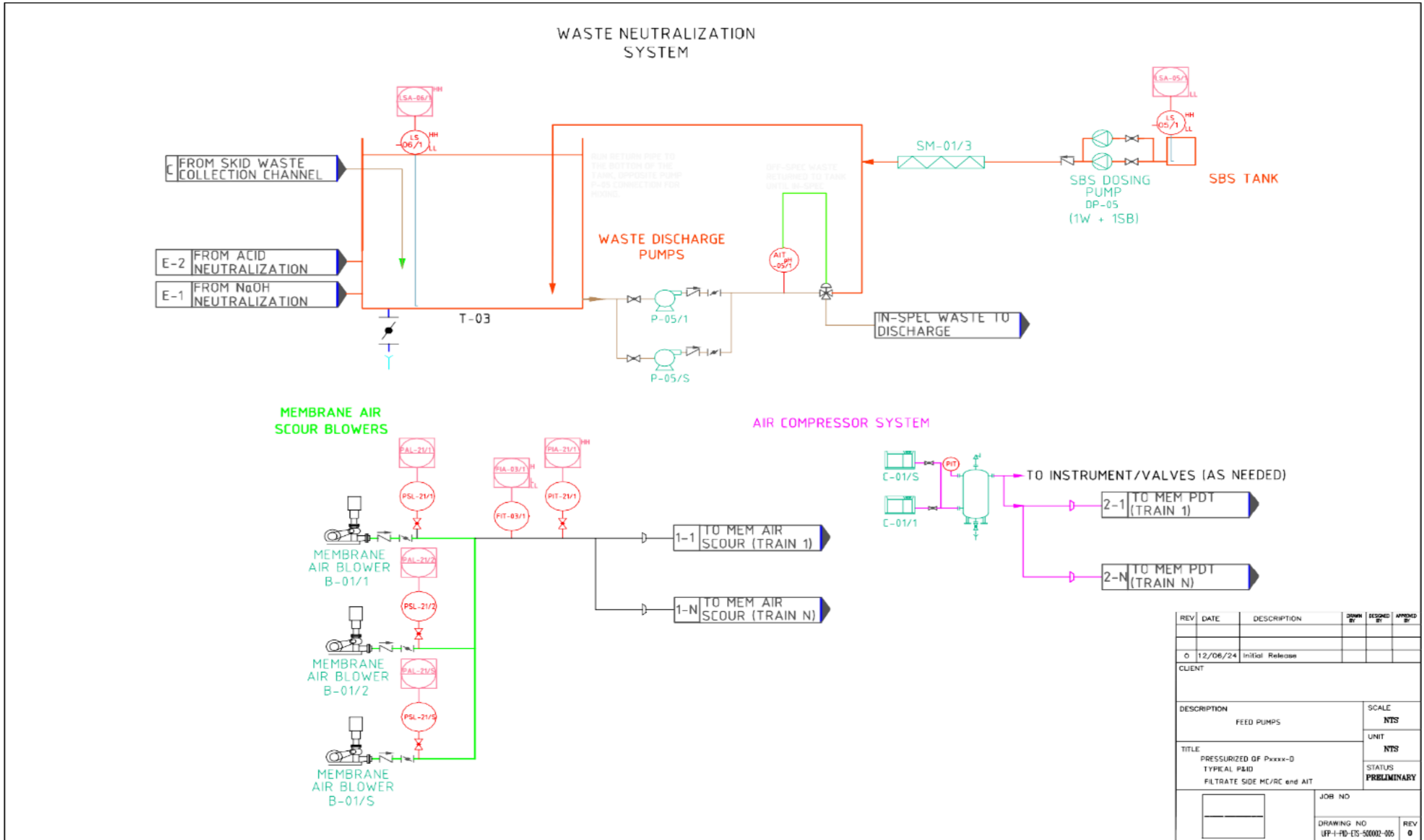
The information contained in this drawing is confidential, privileged and only for the information of the intended recipient and may not be used, published or redistributed without the prior written consent of NANO20. The information expressed are in good faith and while every care has been taken in preparing this drawing, NANO20 makes no representations and gives no warranties of whatever nature in respect of these documents, including but not limited to the accuracy or completeness of any information, facts and/or opinions contained therein.



REV	DATE	DESCRIPTION	DRAWN BY	DESIGNED BY	APPROVED BY
0	12/06/24	Initial Release			

CLIENT	
DESCRIPTION	SCALE
FEED PUMPS	NTS
TITLE	UNIT
PRESSURIZED QF Pxxxx-D TYPICAL P&ID FILTRATE SIDE MC/RC and AIT	NTS
	STATUS
	PRELIMINARY
JOB NO	
DRAWING NO	REV
IFP-I-PD-EIS-50002-004	0

The information contained in this drawing is confidential, privileged and only for the information of the intended recipient and may not be used, published or redistributed without the prior written consent of NANO20. The information expressed are in good faith and while every care has been taken in preparing this drawing, NANO20 makes no representations and gives no warranties of whatever nature in respect of these documents, including but not limited to the accuracy or completeness of any information, facts and/or opinions contained therein.

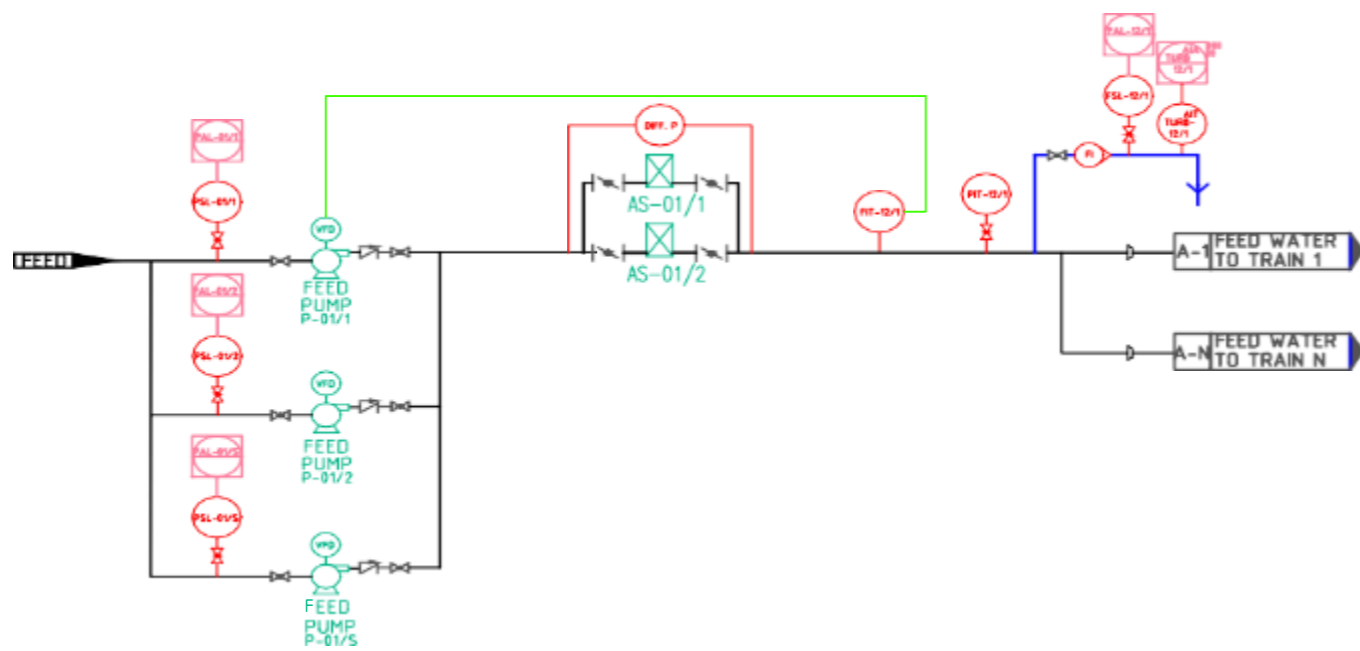


The information contained in this drawing is confidential, privileged and only for the information of the intended recipient and may not be used, published or redistributed without the prior written consent of NANO20. The information expressed are in good faith and while every care has been taken in preparing this drawing, NANO20 makes no representations and gives no warranties of whatever nature in respect of these documents, including but not limited to the accuracy or completeness of any information, facts and/or opinions contained therein.

The following P&I Diagrams refer to QuantumFlux Pxxxx-S modules

FEED PUMPING CENTER TO ALL TRAINS

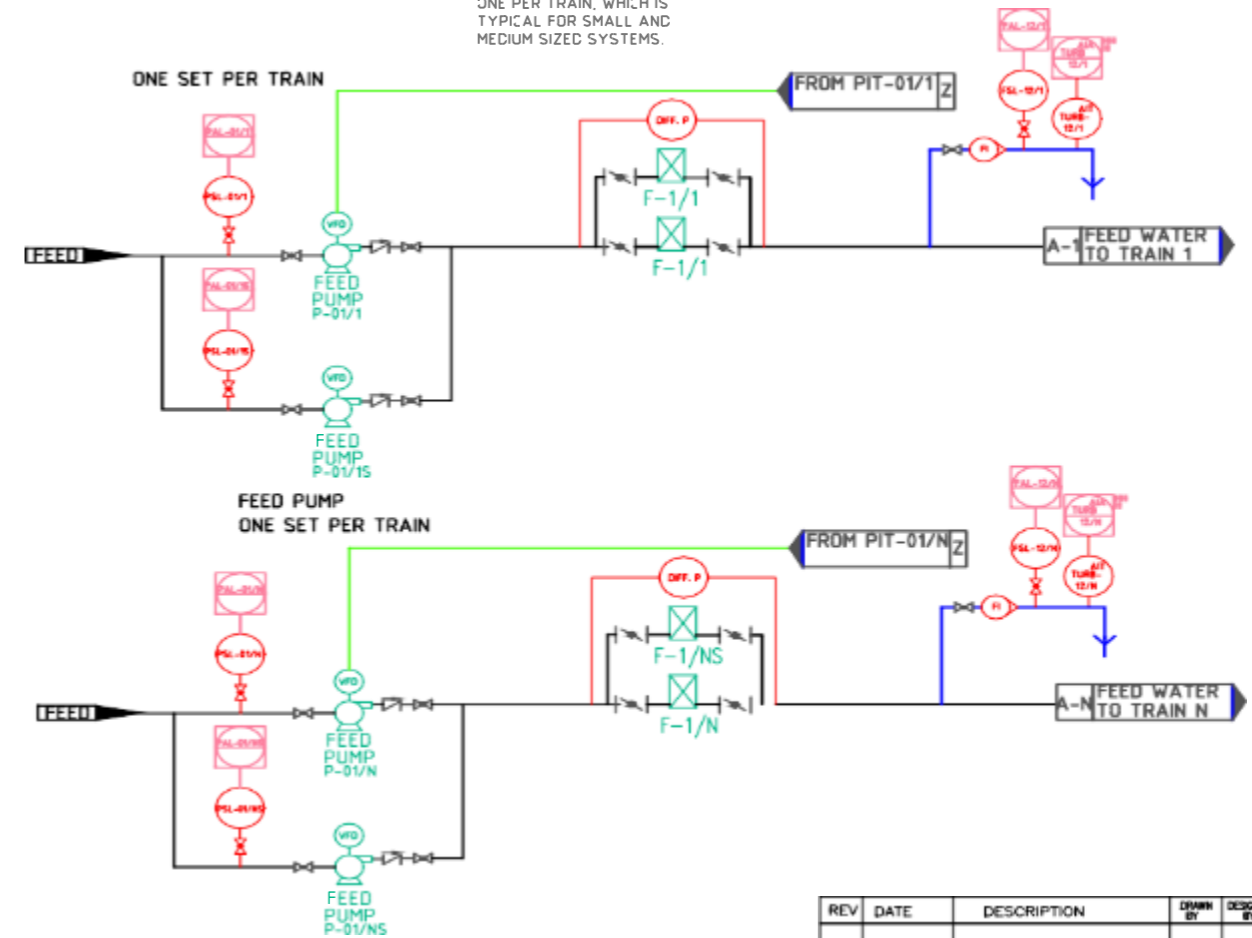
FEED PUMPS ARRANGED IN PARALLEL WITH DISCHARGE TO FEED WATER HEADER, WHICH IS TYPICAL FOR LARGER SYSTEMS.



OR

ONE FEED PUMP PER TRAIN

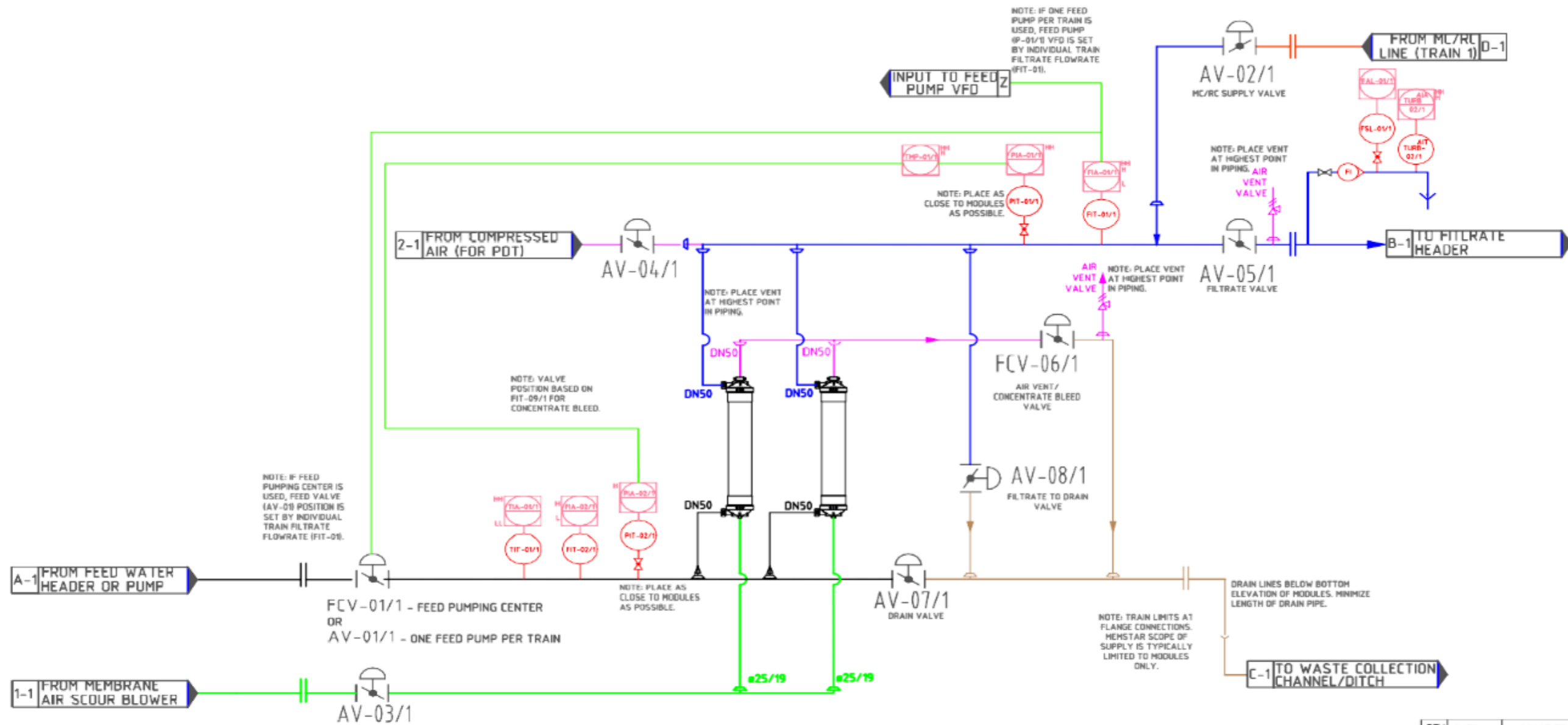
FEED PUMPS ARRANGED AS ONE PER TRAIN, WHICH IS TYPICAL FOR SMALL AND MEDIUM SIZED SYSTEMS.



REV	DATE	DESCRIPTION	DRAWN BY	DESIGNED BY	APPROVED BY
0	12/06/24	Initial Release			
CLIENT					
DESCRIPTION FEED PUMPS					SCALE NTS
TITLE PRESSURIZED OF Pxxxx-S TYPICAL P&ID FILTRATE SIDE HC/RC and AIT					UNIT NTS STATUS PRELIMINARY
JOB NO			DRAWING NO		
			UFP-I-PID-ETS-50001-001		REV 0

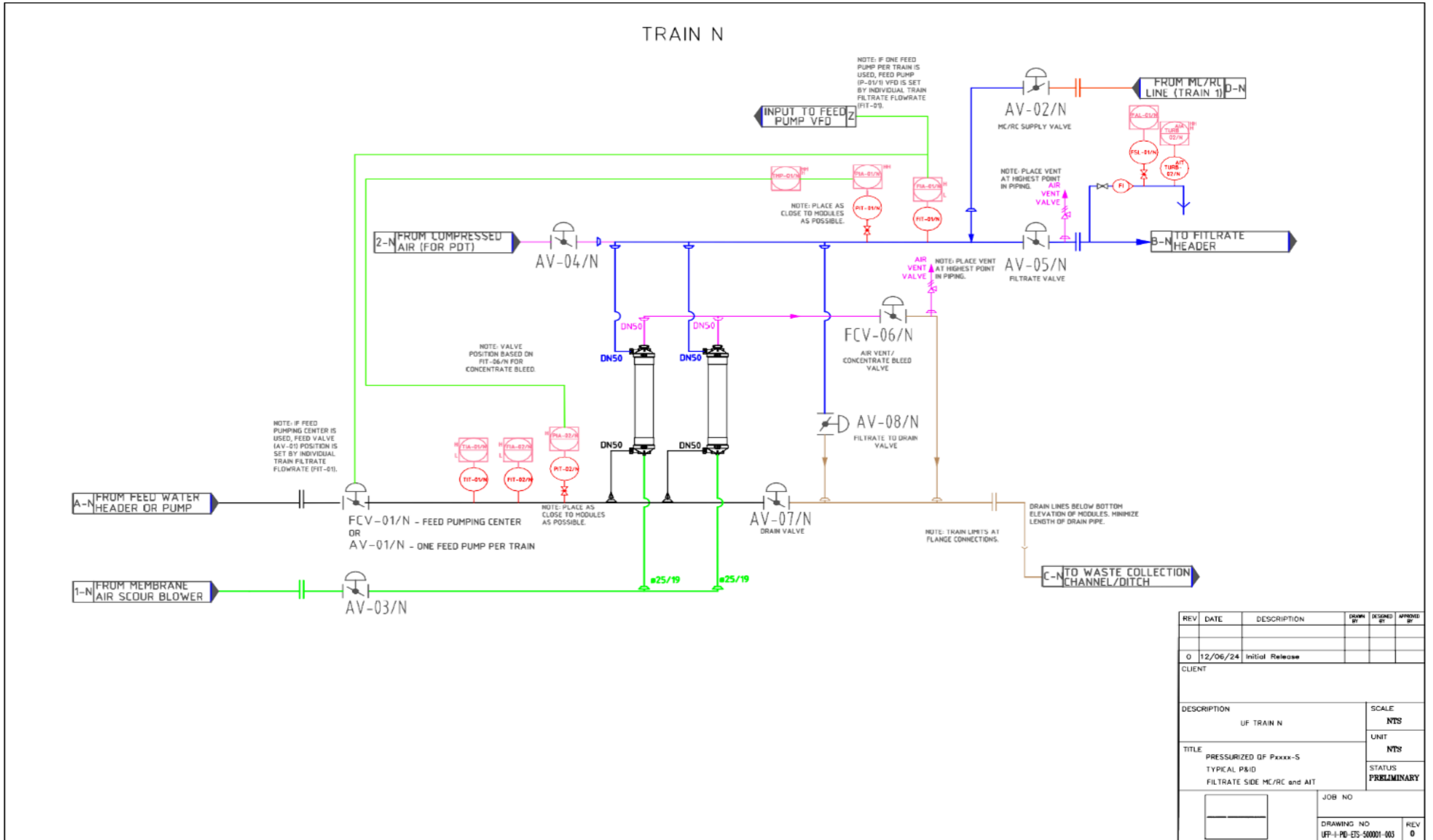
The information contained in this drawing is confidential, privileged and only for the information of the intended recipient and may not be used, published or redistributed without the prior written consent of NANO2O. The information expressed are in good faith and while every care has been taken in preparing this drawing, NANO2O makes no representations and gives no warranties of whatever nature in respect of these documents, including but not limited to the accuracy or completeness of any information, facts and/or opinions contained therein.

TRAIN 1



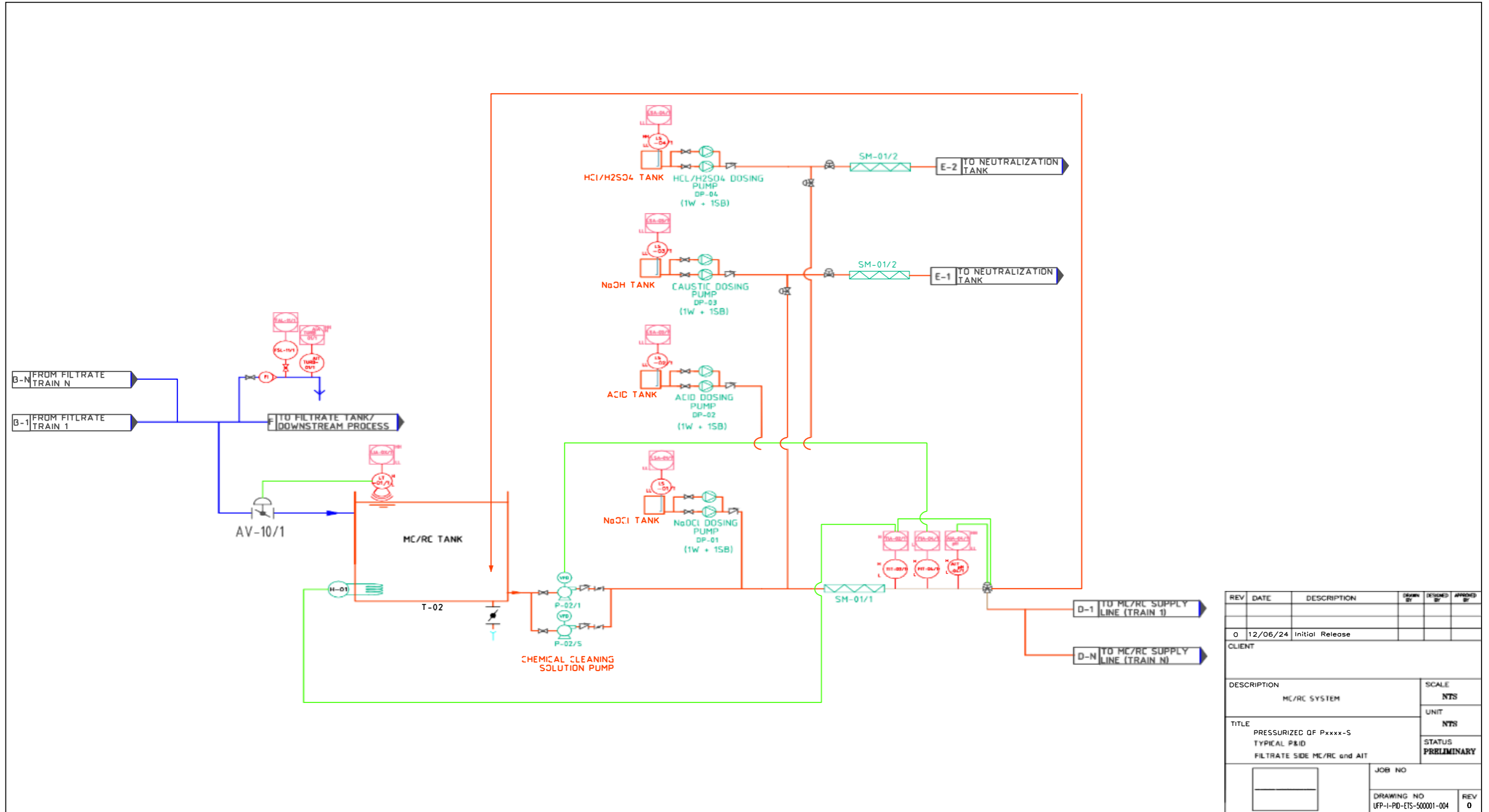
REV	DATE	DESCRIPTION	DRAWN BY	DESIGNED BY	APPROVED BY
0	12/06/24	Initial Release			
CLIENT					
DESCRIPTION				SCALE	
UF TRAIN 1				NTS	
TITLE				UNIT	
PRESSURIZED OF Pxxxx-S TYPICAL P&ID FILTRATE SIDE HC/RC and AIT				NTS	
				STATUS	
				PRELIMINARY	
			JOB NO		
			DRAWING NO		REV
			UFP-I-PD-ETS-50001-002		0

The information contained in this drawing is confidential, privileged and only for the information of the intended recipient and may not be used, published or redistributed without the prior written consent of NANO20. The information expressed are in good faith and while every care has been taken in preparing this drawing, NANO20 makes no representations and gives no warranties of whatever nature in respect of these documents, including but not limited to the accuracy or completeness of any information, facts and/or opinions contained therein.

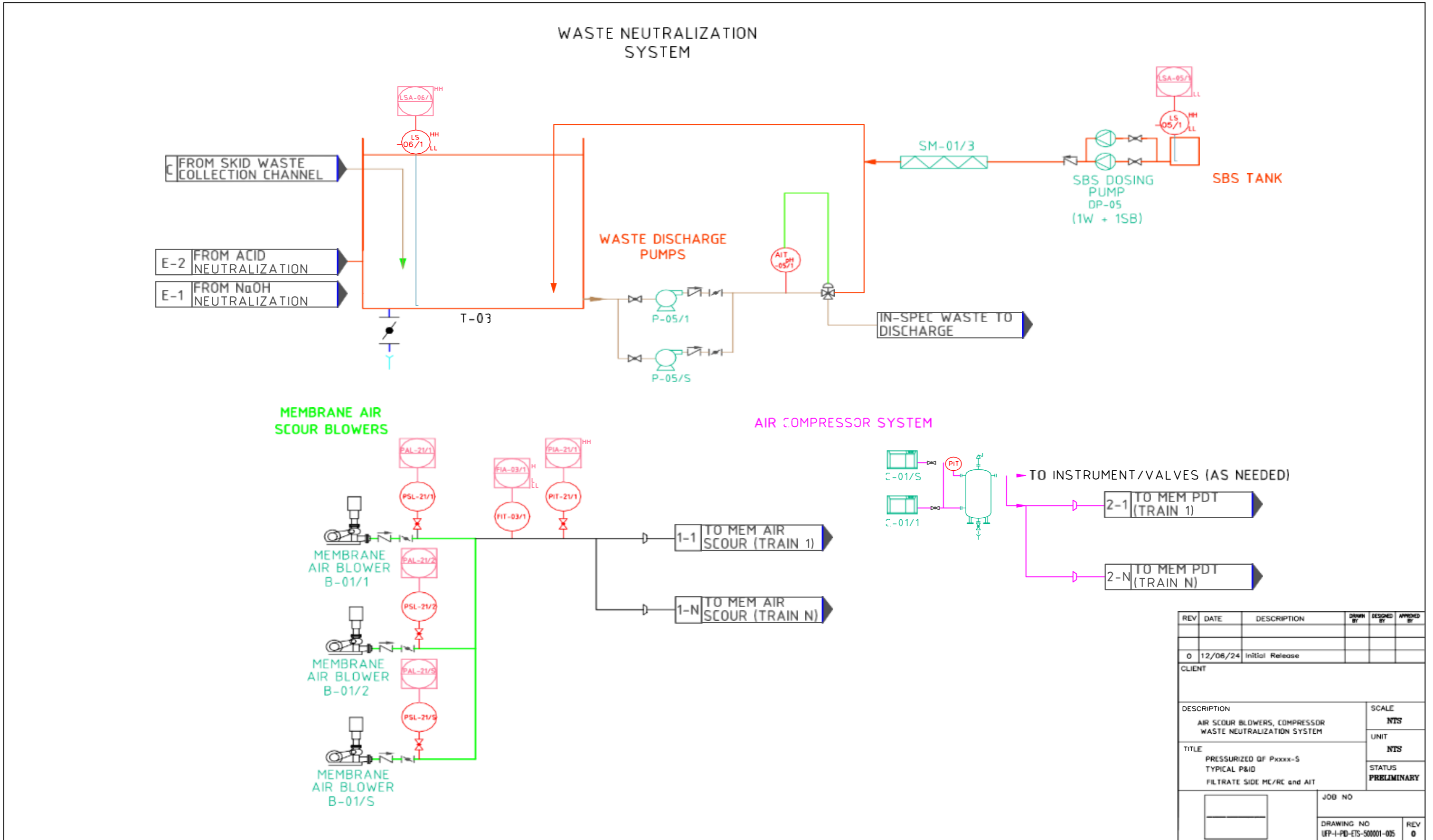


REV	DATE	DESCRIPTION	DRAWN BY	DESIGNED BY	APPROVED BY
0	12/06/24	Initial Release			
CLIENT					
DESCRIPTION				SCALE	
UF TRAIN N				NTS	
TITLE				UNIT	
PRESSURIZED UF Pxxxx-S				NTS	
TYPICAL P&ID				STATUS	
FILTRATE SIDE MC/RC and AIT				PRELIMINARY	
JOB NO			DRAWING NO		
			UFP-I-PD-EIS-50001-003		
REV			0		

The information contained in this drawing is confidential, privileged and only for the information of the intended recipient and may not be used, published or redistributed without the prior written consent of NANO20. The information expressed are in good faith and while every care has been taken in preparing this drawing, NANO20 makes no representations and gives no warranties of whatever nature in respect of these documents, including but not limited to the accuracy or completeness of any information, facts and/or opinions contained therein.



The information contained in this drawing is confidential, privileged and only for the information of the intended recipient and may not be used, published or redistributed without the prior written consent of NANO20. The information expressed are in good faith and while every care has been taken in preparing this drawing, NANO20 makes no representations and gives no warranties of whatever nature in respect of these documents, including but not limited to the accuracy or completeness of any information, facts and/or opinions contained therein.



REV	DATE	DESCRIPTION	DRAWN BY	DESIGNED BY	APPROVED BY
0	12/06/24	Initial Release			
CLIENT					
DESCRIPTION				SCALE	
AIR SCOUR BLOWERS, COMPRESSOR WASTE NEUTRALIZATION SYSTEM				NTS	
TITLE				UNIT	
PRESSURIZED OF Pxxxx-S TYPICAL P&ID FILTRATE SIDE MC/RC and AIT				NTS	
				STATUS	
				PRELIMINARY	
			JOB NO		
			DRAWING NO		REV
			UFP-I-PD-ETS-50001-005		0

The information contained in this drawing is confidential, privileged and only for the information of the intended recipient and may not be used, published or redistributed without the prior written consent of NANO20. The information expressed are in good faith and while every care has been taken in preparing this drawing, NANO20 makes no representations and gives no warranties of whatever nature in respect of these documents, including but not limited to the accuracy or completeness of any information, facts and/or opinions contained therein.